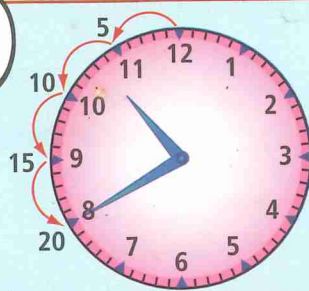


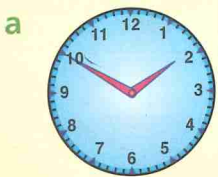
4:06 Analog time



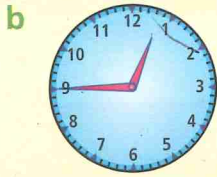
20 minutes to 11

The hour hand is approaching 11.
The minute hand has 20 minutes to go before it reaches the 11.
The time is 20 to 11.

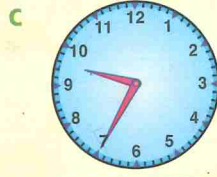
1 Complete the label for each time shown.



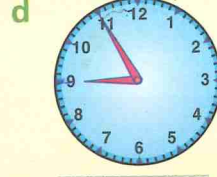
to



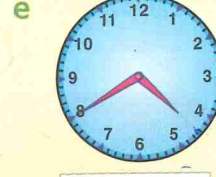
to



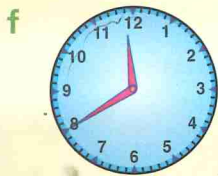
to



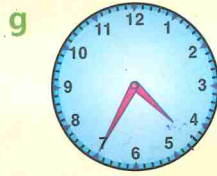
to



to



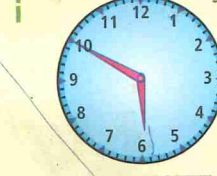
to



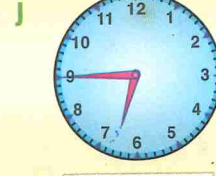
to



to

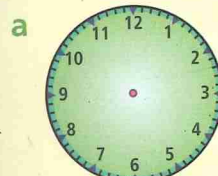


to

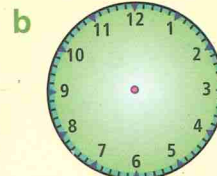


to

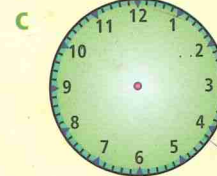
2 Complete the clocks to show the given times.



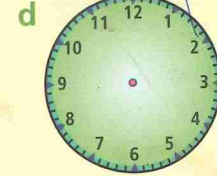
20 to 3



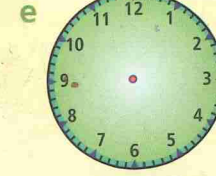
10 to 8



25 to 1



15 to 4



5 to 7

3 Write the time that is five minutes after:

a 20 to 6

b 15 to 9

c 25 to 3

d 20 to 10

e 25 to 11

f 10 to 7

g 5 to 4

h 10 to 6

4 Write the time that is one minute after:

a 5 to 6

b 15 to 11

c 10 to 12

d 25 to 8

e 15 to 8

f 5 to 8

g 20 to 9

h 25 to 4

