

YEAR 8 MATHEMATICS WEEK 2 2020 (TERM 2)

Year: 8

Date: Wednesday 27 May 2020

STRAND: NUMBERS

TOPIC: Ratio

LESSON OUTCOME: At the end of this lesson student(s) should be able to solve simple problems involving ratios.

Instructions: Hi dear Parents/Guardians and students - In this Lesson students are going to solve simple problems involving ratios and do the selected questions for **Exercise 1.8**.

*[Note that all the Quizzes/Test and or Assignment will be based on the selected questions for each exercise. These lessons are designed for **one hour per Lesson**.]*

What to do: Do the following selected questions

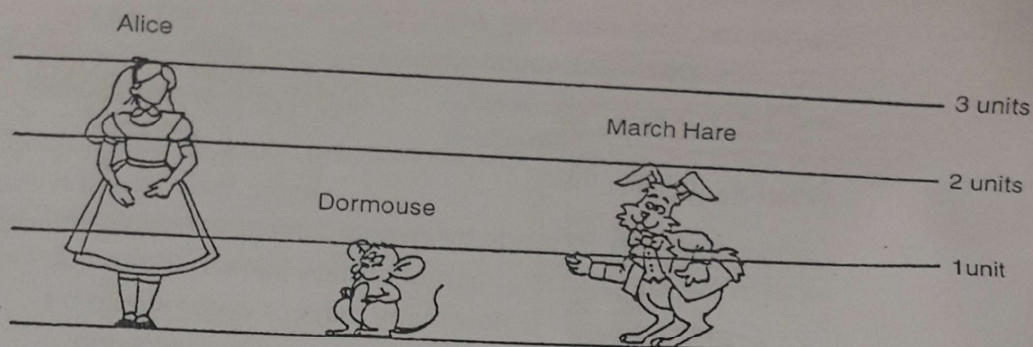
Exercise 1.8: Q10; Q11; Q12

Solutions: Solutions will be available online via

<https://www.facebook.com/centralschoolemergencyforum/posts/108720557434149>

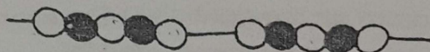
YEAR 8 MATHEMATICS WEEK 2 2020 (TERM 2)

10.



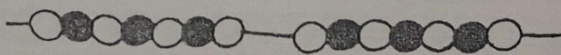
Write out in the same way:

- (a) price of pen: price of pencil = 10 : 1
- (b) length of car: length of model = 50 : 1
- (c) weight of baby: weight of sister = 1 : 8



11. Look at this necklace.

- (a) What is the ratio of white beads to black beads?
- (b) Marie made a necklace like this, using 16 black beads.
How many white beads did she need?
- (c) Emma made a necklace like this, using 18 white beads.
How many black beads did she need?



12. Look at this necklace.

- (a) If a necklace like this has 27 black beads, how many white beads does it have?
- (b) If a necklace like this has 28 white beads, how many black beads does it have?

13. In a bracelet, the ratio of black beads to white beads is 5 to 2. If there are 10 white beads, how many beads are there altogether?