

## YEAR 8 MATHEMATICS WEEK 12 2020 (TERM 1)

**Year: 8**

**Date: Thursday 23 April 2020**

**STRAND: NUMBERS**

**TOPIC: Rates**

**LESSON OUTCOME:** At the end of this lesson student(s) should be able to calculate rate and speed.

**Instructions: Hi dear Parents/Guardians and students** - In this Lesson students are going to calculate rates and speed and do the selected questions for **Exercise 1.4**.

*[ Note that all the Quizzes/Test and or Assignment will be based on the selected questions for each exercise. These lessons are designed for **one hour per Lesson**. ]*

**What to do:** Do the following selected questions

**Exercise 1.4: Q1; Q6, Q7**

**Solutions:** Solutions will be available online via

<https://www.facebook.com/centralschoolemergencyforum/posts/108720557434149>

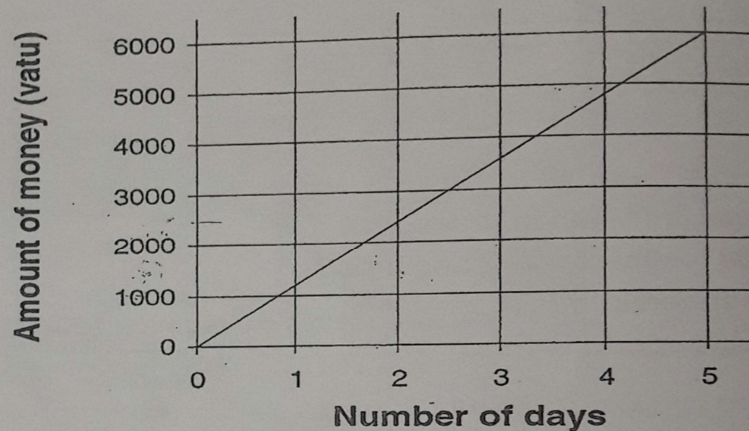
# YEAR 8 MATHEMATICS WEEK 12 2020 (TERM 1)

## Exercise 1.4 More rates

- Sam works for 450 vatu per hour. Copy and complete the table to show how much he earned in an 8-hour day.

Hours	1	2	3	4	5	6	7	8
Earnings								

- Marie works 5 days and she gets paid 6 000 vatu. Here is a graph of her earnings.



Use the graph to find how much she earns in

- (a) 2 days                      (b) 3 days                      (c)  $\frac{1}{2}$  day?

- Copy and complete this table:

Name	Rate of pay (per hour)	Number of hours worked	Total pay (vatu)
Penny	200	4	
Tania	350	6	
Winston	500		3 500
Fiona	250		1 000
Lenny		3	1 200
Noelline		$\frac{1}{2}$	325

## YEAR 8 MATHEMATICS WEEK 12 2020 (TERM 1)

4. A bottle-washing machine washes 600 bottles per hour.
  - (a) What rate is this per minute?
  - (b) How long does it take to wash each bottle?
5. Emma runs 30 km in four hours.
  - (a) What is her speed in kilometres per hour? (km/h)?
  - (b) What is Emma's speed in metres per minute? (m/min)?
6. For each of the following, find the cost of one.

Article	Price (vt)
3 baskets of taro	900
5 baskets of yam	2 200
4 baskets of kumala	1 200
2 hands of banana	1 140
12 pamplemousses	1 440
8 breadfruits	640
3 bundles of cabbage	390
6 baskets of manioc	1 320
9 mangoes	540

7. You want to earn 3 000 vatu for Christmas. You can work 2 hours every Saturday. There are six Saturdays left before Christmas. What rate of pay per hour must you get to make sure you earn 3 000 vatu?